



Free Phone: 0800 342 3177

ORWAK CONNECT

ENABLES YOUR MACHINE TO COMMUNICATE!



ORWAK CONNECT – A SMART OPTION

For excellent supervising opportunities!

- A modem-based communication service supplied by an external partner
- Available for the models ORWAK COMPACT, POWER, MULTI 9020S and TOM.
- The machine sends a message when it is full or needs maintenance
- Free access to the ORWAK Connect web portal
 - monitor the current status of your fleet of machines
 - gather statistics – for example number of bales/bags produced in a specific period of time
- A premium option: a built-in scale for monitoring the bale weight (valid for COMPACT and POWER)



ORWAK CONNECT 2.0

JUST LAUNCHED!
NEW SERVICE –
MORE FEATURES

What is new?



- **Possible to translate the portal via**
- Collect data via API (REST API) .
- **Completely new design and modern interface at the portal.**
- **Improved map features.**
- The portal is adaptive to smart phone browsers and **an app will soon be available.**
- Push notices replace SMS notifications; included in the app.
- Ability to select type of notification for each recipient:
“Full bale/bag”, “Service”, “Status”, “Error” and “Fill level”
- Change machine parameters remotely.*
- Turn off the machine remotely.*
- Get a hydraulic pressure curve remotely.*

* Require administrator privileges

ORWAK CONNECT MAIN BENEFITS

- **Uninterrupted use:** The caretaker gets notified immediately when the machine needs attention = reduces downtime effectively!
- **Productive use of time:** No need to check on the machines on routine, only when notified. Time-saving if several units are spread out in vast premises or in different locations.
- **Stay in control!** The web portal provides a unique opportunity to monitor your fleet of machines on a day-to-day basis and the exact bale/bag production during a specific period of time.
- **Optimal logistics:** plan the bale/bag collection routes efficiently based on the data in the portal.



Make sure that the machine is up and running! View bale/bag statistics to analyze the material output over time!

ORWAK CONNECT FOR TOM

Excellent service around the clock



CONNECT adds extra value to and is especially recommended for our automatic waste bin TOM in environments like malls, food courts, airports, train stations and theme parks, where many units are spread out in a large area. Thanks to CONNECT, the caretaker gets a message when TOM needs attention and the portal provides an overview of the entire fleet!

TOM: "DON'T CALL ON ME! I CALL YOU!"



ORWAK CONNECT IN MORE DETAIL

ORWAK CONNECT

- Communication: the machine sends two types of messages “Full” and “Fault”:
 - Machine 80 % full
 - Machine 100 % full
 - Technical issue: 25 (depends of model) different potential error codes with text descriptions
- Free access to the web portal
- Bale/bag counter
- Statistics on press cycles and bales/bags

ORWAK CONNECT PLUS

- ORWAK Connect standard package described above
- Premium feature: a built-in scale for monitoring the bale weight

ORWAK CONNECT PLUS

- The built-in-scale is based on 4 load cells connected to a display



ORWAK CONNECT PLUS

- The display shows the current bale weight (the load in the press chamber)

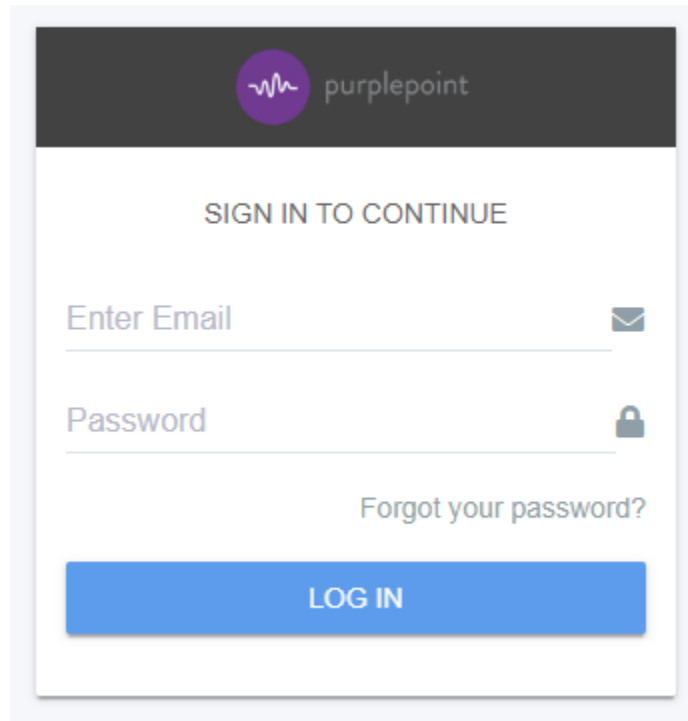


Display settings: weight in kg or lbs.

- The baler sends the bale weight data to the web portal, where the current weight is displayed, and bale weight statistics can be collected.

THE WEB PORTAL

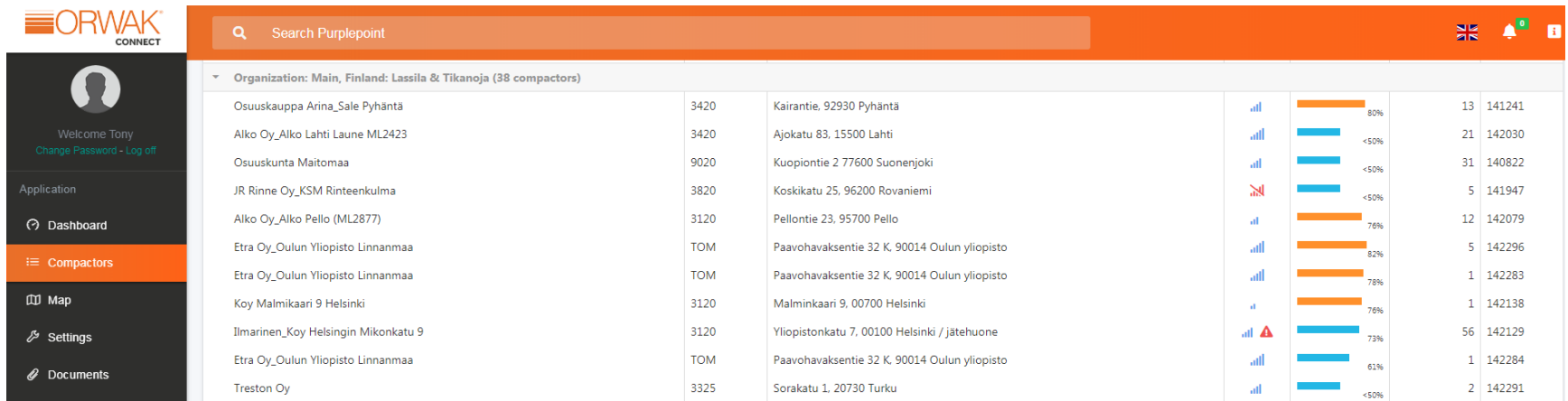
- Accessible 24/7 from any device having Internet connection
- Unlimited use for your convenience
- Different access levels can be set within an organization: for example HQ (administrator) and store manager (viewer)



The image shows a screenshot of a web portal login page. At the top, there is a dark header with the Purplepoint logo (a purple circle with a white waveform) and the text "purplepoint". Below the header, the text "SIGN IN TO CONTINUE" is centered. There are two input fields: "Enter Email" with an envelope icon and "Password" with a lock icon. Below the password field is a link that says "Forgot your password?". At the bottom, there is a large blue button with the text "LOG IN".

THE WEB PORTAL – MONITOR

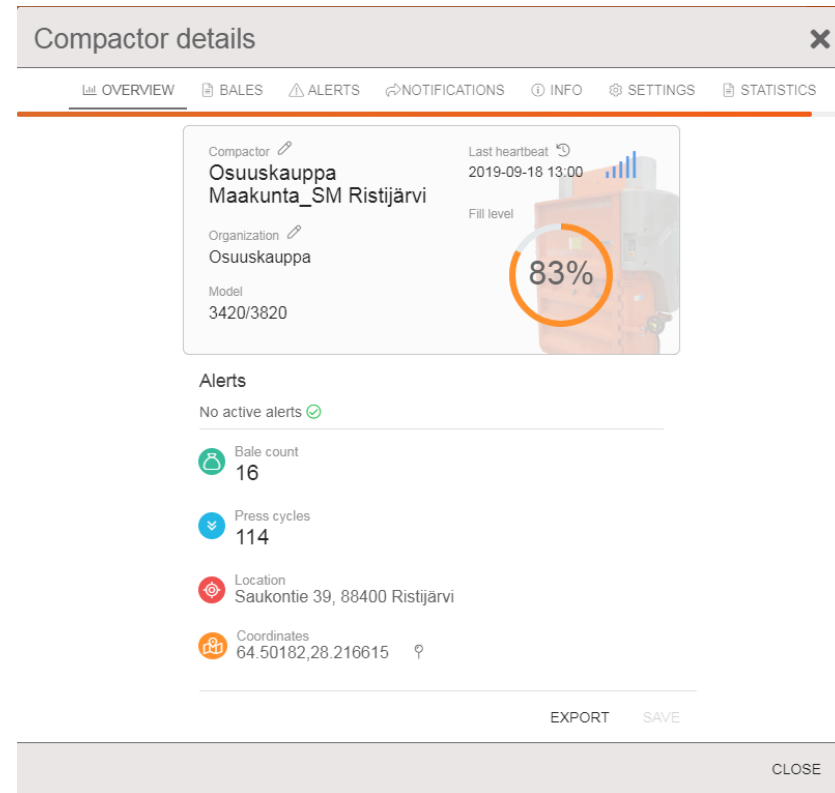
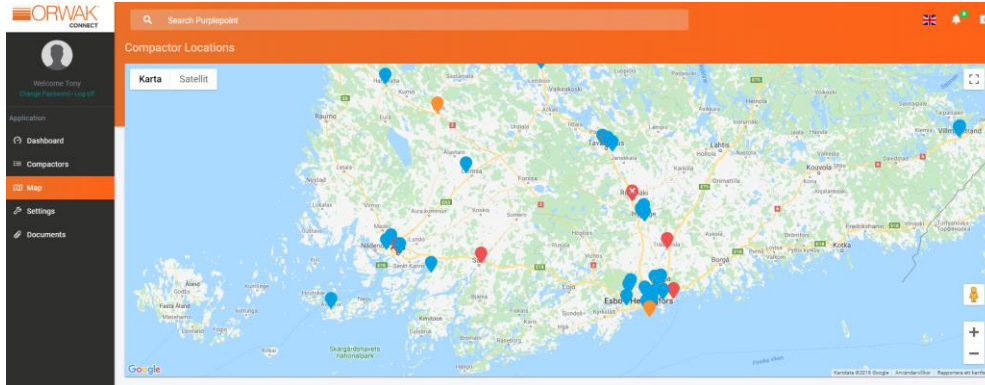
- **An overview of all your activated machines and their status:**
 - Serial number
 - Location
 - Status of the machine
 - Status of the communication system
 - Fullness level (degree of material in the chamber/bin)
 - Accumulated number of bales/bags produced since activation



THE WEB PORTAL – MONITOR

Get more detailed data on a specific machine by clicking on it in the overview:

- Machine status, current fullness level in % and location
- A list of all registered notification recipients
- See the position of the machine on a map (if the coordinates are filled out)
- ORWAK Connect Plus:
 - “Last bale weight”: the bale weight from the most recent bale out
 - “Current bale weight”: the weight of the current load in the baler



THE WEB PORTAL – ADMINISTRATE

- Add location data
- Invite local users in your organization to the portal
- Add notification recipients for “full bale/bag” and “fault, machine requires maintenance”

The screenshot displays the 'Compactor details' web portal interface. At the top, there is a navigation bar with tabs for OVERVIEW, BALES, ALERTS, NOTIFICATIONS*, INFO, SETTINGS, and STATISTICS. The 'NOTIFICATIONS*' tab is currently selected. Below the navigation bar, the 'Email' section shows a list of email addresses: mail@example.com; mail2@domain.com. To the right of this list, there is a text input field labeled 'Enter collect interval: 1'. Below the email list, there are several toggle switches for notification settings: Bale notification (checked), Service (checked), Operational state (unchecked), Error alerts (checked), and Bale Level (unchecked). At the bottom right of the notification settings, there are 'ADD' and 'CANCEL' buttons. At the bottom center of the interface, there is an 'ADD RECIPIENT' button. At the bottom right corner, there is a 'CLOSE' button.

THE WEB PORTAL – VIEW STATISTICS

Set start and end date in the calendar to see statistics per individual machine for a specific period of time:

- Number of press cycles
- Number of bales/bags
- Number of alarms
- If Connect Plus (the scale) is used, you get the weight of each bale.

Compactor details ✕

OVERVIEW **BALES** ALERTS NOTIFICATIONS INFO SETTINGS STATISTICS

Bale	Timestamp	Level	Total press cycles	Weight	Bale level settings
3	5/9/2019, 9:34 AM	100%	127	0	215 (0 - 430)
4	5/18/2019, 10:20 AM	100%	133	0	215 (0 - 430)
5	5/27/2019, 7:34 PM	99%	126	0	215 (0 - 430)
6	6/25/2019, 6:19 AM	100%	319	0	215 (0 - 430)
7	7/1/2019, 4:52 PM	100%	190	0	215 (0 - 430)
8	7/9/2019, 10:52 AM	100%	175	0	215 (0 - 430)
9	7/16/2019, 6:32 AM	100%	138	0	215 (0 - 430)
10	7/17/2019, 10:08 AM	100%	38	0	215 (0 - 430)
11	7/25/2019, 12:30 PM	100%	193	0	215 (0 - 430)
12	8/1/2019, 8:03 AM	100%	117	0	215 (0 - 430)

05/01/2019 - 09/18/2019 EXPORT

CLOSE

Compactor details ✕

OVERVIEW BALES **ALERTS** NOTIFICATIONS INFO SETTINGS STATISTICS

Raised	Alert	Level	Acknowledged
8/20/2019, 12:23 PM	Bale	1	8/20/2019, 12:31 PM
8/28/2019, 6:18 AM	Bale	1	8/28/2019, 8:45 AM
8/28/2019, 11:30 AM	Bale	1	8/28/2019, 11:49 AM
9/3/2019, 1:26 PM	Bale	1	9/3/2019, 1:59 PM
9/7/2019, 10:22 AM	Bale	1	9/7/2019, 2:19 PM
9/7/2019, 2:19 PM	Bale	1	9/7/2019, 3:11 PM
9/7/2019, 3:11 PM	Bale	1	9/9/2019, 1:14 PM

08/18/2019 - 09/18/2019 EXPORT

INFO WARNING DANGER

CLOSE

THE WEB PORTAL – VIEW STATISTICS

- The bale/bag statistics in the web portal is easily exportable to an Excel spreadsheet.

	A	B	C	D	E	F	G	H	I	J
1	Timestamp	Bale Count	Bale Weight	Fill level (%)	Total Press	HP Cycles	LP Cycles	Bale level settings		
2	2019-04-04 10:26:30 UTC+02:00	1	0	100	100	5	106	215 (0 - 430) (0 - 430)		
3	2019-04-30 11:05:56 UTC+02:00	2	0	100	100	73	90	215 (0 - 430) (0 - 430)		
4	2019-05-09 09:34:36 UTC+02:00	3	0	100	100	127	0	215 (0 - 430) (0 - 430)		
5	2019-05-18 10:20:12 UTC+02:00	4	0	100	100	133	0	215 (0 - 430) (0 - 430)		
6	2019-05-27 19:34:12 UTC+02:00	5	0	98	99	126	0	215 (0 - 430) (0 - 430)		
7	2019-06-25 06:19:25 UTC+02:00	6	0	100	100	319	0	215 (0 - 430) (0 - 430)		
8	2019-07-01 16:52:36 UTC+02:00	7	0	100	100	190	0	215 (0 - 430) (0 - 430)		
9	2019-07-09 10:52:53 UTC+02:00	8	0	100	100	175	0	215 (0 - 430) (0 - 430)		
10	2019-07-16 06:32:44 UTC+02:00	9	0	100	100	138	0	215 (0 - 430) (0 - 430)		
11	2019-07-17 10:08:03 UTC+02:00	10	0	100	100	38	0	215 (0 - 430) (0 - 430)		
12	2019-07-25 12:30:48 UTC+02:00	11	0	100	100	193	0	215 (0 - 430) (0 - 430)		
13	2019-08-01 09:03:42 UTC+02:00	12	0	100	100	117	0	215 (0 - 430) (0 - 430)		
14	2019-08-20 07:56:04 UTC+02:00	13	0	100	100	249	0	215 (0 - 430) (0 - 430)		
15	2019-08-28 08:45:22 UTC+02:00	14	0	100	100	138	0	215 (0 - 430) (0 - 430)		
16	2019-09-09 13:14:02 UTC+02:00	15	0	100	100	128	0	215 (0 - 430) (0 - 430)		
17										
18										

INCLUDED IN THE CONNECT PACKAGE

- The SMART modem and access to the web portal.
- The SIM-card is already implemented in the modem; no need to worry about local operator agreements!
- Unlimited email communication from the machine to notification recipients.
- An app for smart phones is soon available. Push notifications will then be included.
- Possible to retrieve data via REST API (On request).
- Please note! A stable mobile connection at the installation site is required for the Connect service to work properly.
- We hope that you find the service valuable and wish to continue to use it! The subscription will be automatically prolonged for another 12 months, if not actively terminated in advance.

ALWAYS ONE STEP AHEAD: STAY CONNECTED!





Free Phone: 0800 342 3177

